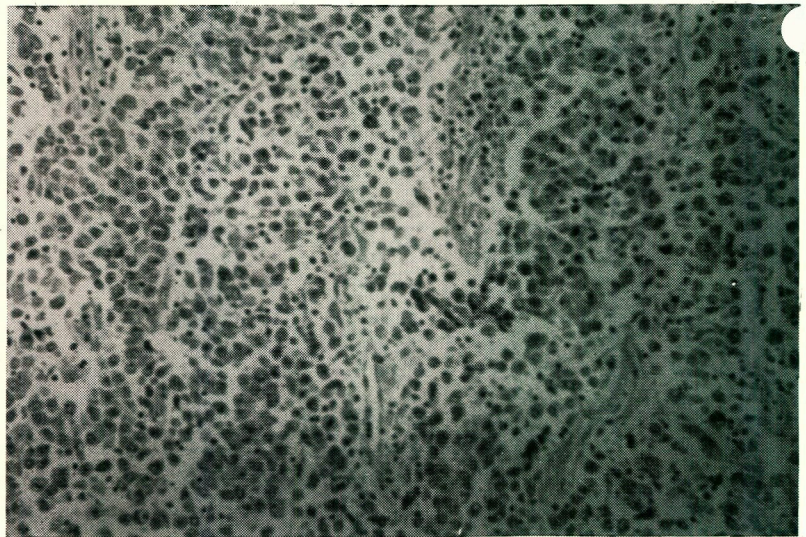


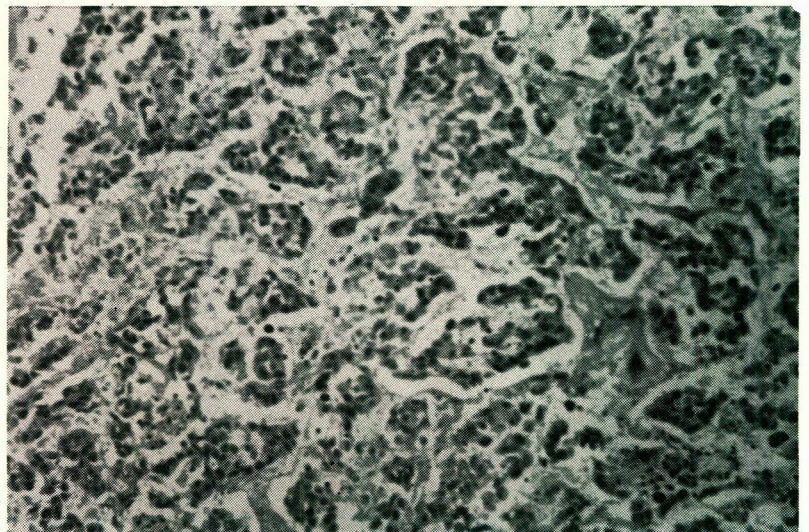
*Fig. 1 - Microsection of case No. 1 showing metastatic papillary adenocarcinoma in a lymph node.*



*Fig. 2 - Lymphangiograph of case No. 1 showing enlarged left iliac and paraortic lymph nodes.*



*Fig. 3 - Microsection of case No. 1 showing the primary site of papillary adenocarcinoma revealed when a deeper section of the testis was made.*



*Fig. 4 - Microsection of case No. 2 showing features of seminoma.*