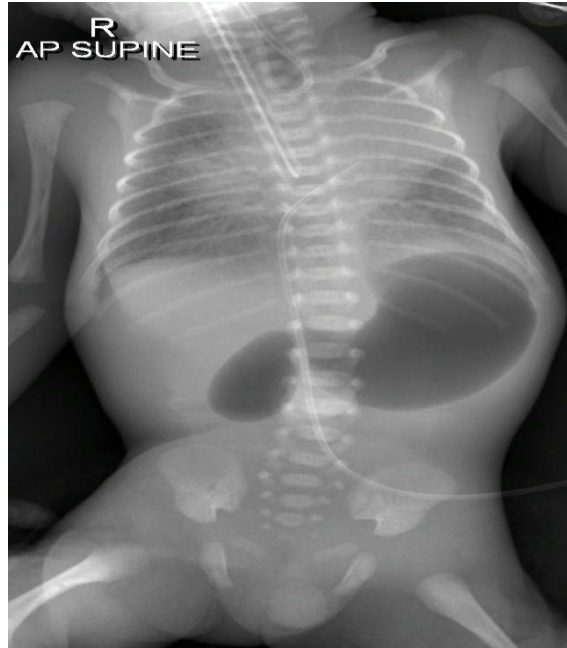


Medical Quiz

Tarek Mohamed Mahmoud, MRCP (UK)*

This is an x-ray of a baby boy born at 29 weeks gestation. His birth weight was one kilogram. After resuscitation, he was transferred to the Neonatal ICU (NICU) intubated and mechanically ventilated. The baby was found to have a combination of congenital anomalies.



- Q1. Identify the 3 indwelling catheters/tubes in the x-ray?
- Q2. Why is the uppermost tube coiled back on itself?
- Q3. Explain the “double bubble” gas effect in the upper abdomen?
- Q4. What is wrong with the position of the middle widest-diameter tube?
- Q5. What could be the diagnosis from the lung fields in the chest x-ray?

* Senior Registrar
Intensive Care Unit
King Hamad University Hospital
Kingdom of Bahrain
Email: tarek.mahmoud@khuh.org.bh