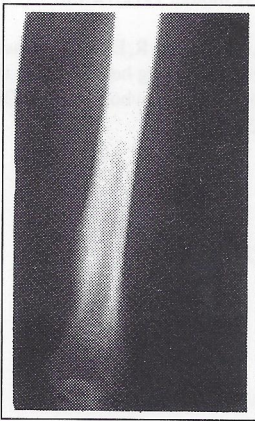


MEDICAL QUIZ

Patrik Pim, MBBS, FRCR

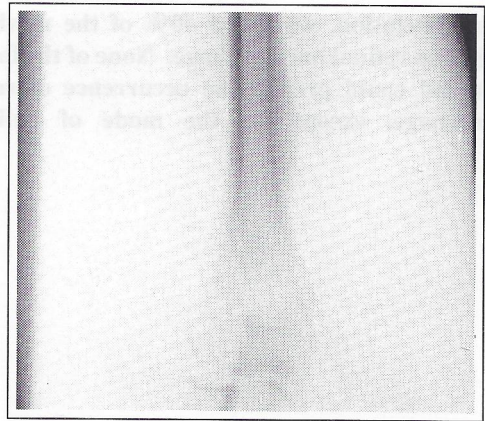
CASE A

A 28-year-old male presented with a localised pain in the right distal humerus.



- Q. 1. What abnormalities are present?
2. What is the most likely cause?

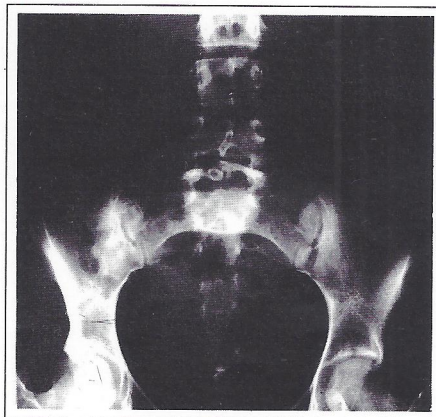
The pain had been present for 4-weeks, and was particularly marked at night.



- Q. 3. What further imaging investigations would you consider?

CASE B

A young woman presented with non-specific abdominal pain of 12-hours duration.



- Q. 1. What are the structures centrally situated in the pelvis?
2. What is the lucent area around the central densities?
3. What is the diagnosis?

Answers on page 28