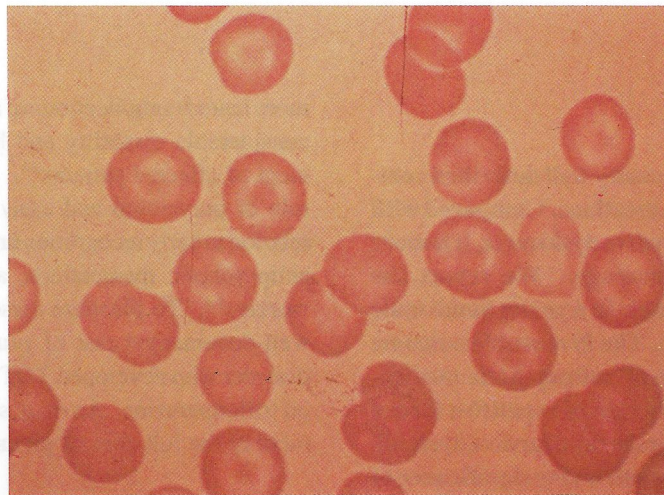


MEDICAL QUIZ

Akbar M Mohammad

A 6 week old male infant admitted to the hospital with history of progressive jaundice. His peripheral blood smear showed the cells seen in the figure.



- Q1. What kind of jaundice do you expect this infant to have ?
- Q2. What are the cells demonstrated ?
- Q3. What is the mechanism by which such cells are formed ?
- Q4. What other conditions are characterised by appearance of these cells in the peripheral blood ?