

Medical Quiz

Aysha Mubarak Jaber, FRCR*

Devdas Shenoy, MD**

Tariq Hameed, FRCS***

A 35 year old Pakistani male was admitted with history of epigastric pain for the past 2 years. He had of late few bouts of vomiting and hematemesis. The patient also complained of weight loss. Physical examination revealed a vague mass in the epigastric region. Bowel sounds were active. Laboratory data showed anaemia and raised ESR.

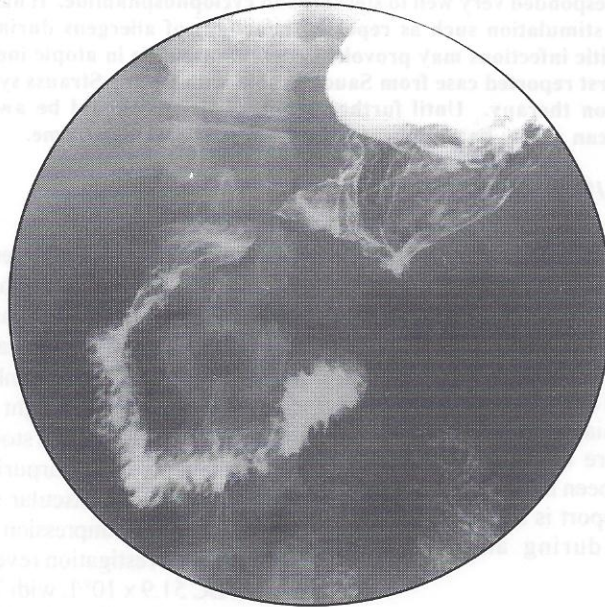


Fig 1

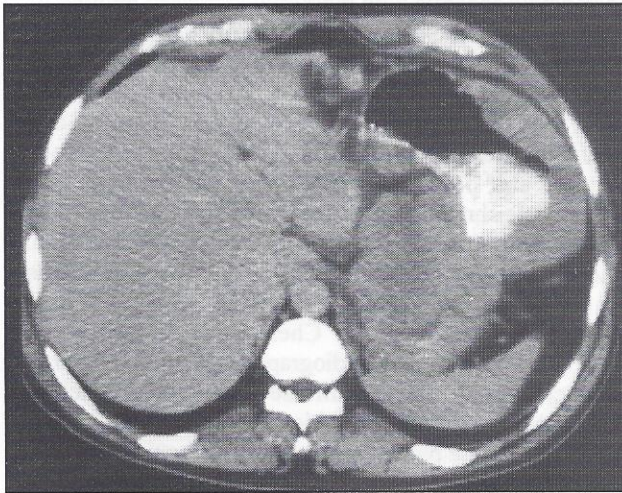


Fig 2a

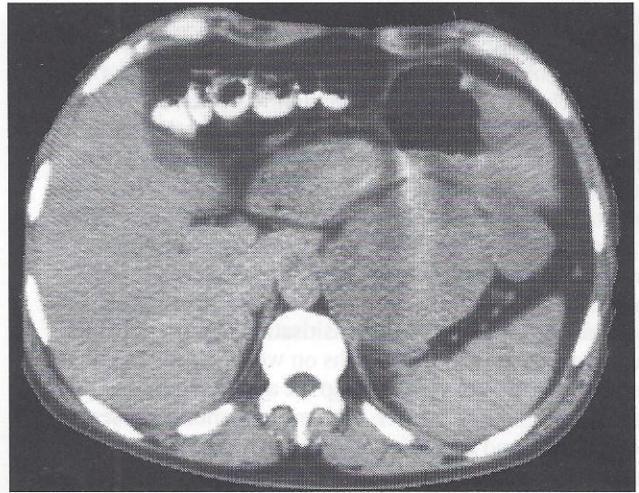


Fig 2b

1. What are the x-ray and the CT-scan findings in Fig 1 and 2 (a & b) ?
2. What is your diagnosis ?

Answers on page 29